



GUIDELINE

Ventilation: High Frequency Jet Ventilation (HFJV)

Scope (Staff):	Nursing and Medical Staff
Scope (Area):	NICU KEMH, NICU PCH, NETS WA

Child Safe Organisation Statement of Commitment

CAHS commits to being a child safe organisation by applying the National Principles for Child Safe Organisations. This is a commitment to a strong culture supported by robust policies and procedures to reduce the likelihood of harm to children and young people.

This document should be read in conjunction with this [disclaimer](#)

Contents

Advantages of HFJV 2

Complications associated with HFJV 3

Criteria and Indications for use..... 3

Commencing HFJV from Conventional Ventilation (CV)..... 4

Management..... 7

Understanding Servo Pressure 7

ETT Suction on HFJV 8

Nitric Oxide and HFJV 9

Weaning off HFJV..... 10

Setting-Up the HFJV Circuit 11

Aim

Outline the management of infants that require respiratory support via high frequency jet ventilation.

Risk

Infants nursed with high frequency jet ventilation are dependant on respiratory support. This guideline is provided to ensure safe operations of the ventilator to improve patient outcomes.

Background

The Life Pulse High Frequency Jet Ventilator (HFVJ) is a microprocessor-controlled infant ventilator capable of delivering and monitoring between 240 and 420 breaths/min; hence, HFJV delivers very small tidal volumes at supra-physiological frequencies.

Advantages of HFJV

The key advantage of HFJV is minimised lung trauma through ultra-low tidal volume ventilation at optimal lung volume, minimising also the level of required supplemental oxygen. An additional advantage is that spontaneous breathing is more easily achieved in parallel with HFJV than with HFOV and may be more comfortable for the infant as end-expiratory pressure is lower than during HFOV. This also potentially allows better lung perfusion than during HFOV due to lower pulmonary vascular resistance.

During HFJV, the clinician recruits the lung (as required) and identifies an optimal PEEP for alveolar stabilisation. Collapsed lung units are recruited predominantly using PEEP (“ramping” up and down, similar to recruitment with mean airway pressure during HFOV). The addition of low rate (0-5 breaths/min) background gentle sigh breaths via superimposed conventional ventilation (CV) for short intervals may assist with recruitment, but is best avoided, as this can result in overdistension of the lungs. The high velocity low tidal volume jet “pulses” minimise the effective dead space, thereby increasing ventilation efficiency whilst also protecting the alveolar spaces from cyclic volutrauma. Any injured areas of the lungs can rest and heal.

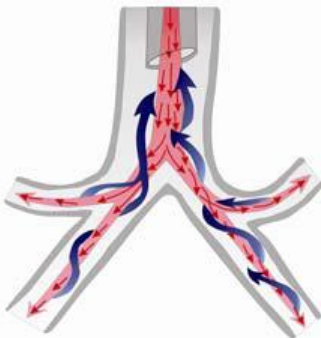


Figure 1: Gas Flows in HFJV. Fresh inspiratory gas is directed down the centre of the airways whilst the slower moving, passively exchanged gas moves outwards along the airway walls. This counter current pattern facilitates airway clearance.

In addition, the asymmetric flow profile associated with the rapid inspiration and slow expiration enhances mucociliary clearance.

Use of HFJV from birth may limit the severity of lung disease by minimising volutrauma. HFJV may provide benefit in established non-homogeneous lung disease (e.g. pulmonary interstitial emphysema, pneumonia, meconium aspiration syndrome and evolving BPD), by resolution of air trapping and over-distension. Additionally, injured areas with high-resistance airways are “rested” in inhomogeneous lung disease as the high inspiratory gas flows preferentially ventilate the healthier areas of the lung and bypass the high-resistance airways. PEEP splints the airways open, allowing gas to escape over the longer expiratory phase of each cycle. It is important to remember that whilst HFJV inspiratory pulses occur 4-11 times a second, the tidal volume is delivered in a very short time (ranging from 0.02 to 0.034 s). Hence, the inspiratory flows are more similar to the inspiratory flows of very high-frequency HFOV: at an HFJV inspiratory time of 20 milliseconds, the equivalent inspiratory flows in HFOV would be achieved at frequencies of 16.7 Hz (1:2) or 25 Hz (1:1).

Complications associated with HFJV

- ETT Obstruction (same as CV).
- Tracheal Injury (same as CV).
- Hypercarbia due to inadequate tidal volume consequent to:
 - inadequate HFJV amplitude,
 - insufficient inspiratory time,
 - inadequate HFJV rate.
- Hypocarbica resulting from excessive tidal volume consequent to
 - excessive HFJV amplitude,
 - excessive inspiratory time,
 - excessively high HFJV rate.

The highest risk of hypocarbica is during initiation of HFJV (due to unrecognised increased efficiency of gas exchange) or during periods of rapid improvement/lung recruitment when delivered tidal volume may increase unless the HFJV pulse amplitude is decreased. Hypocarbica within the first few days of life is associated with the subsequent development of periventricular leukomalacia (PVL) in preterm infants ⁽²⁾.

- Hyperinflation and/or Inadvertent PEEP (air trapping) and potential development of air leak syndrome (pneumothorax, pneumomediastinum, pulmonary interstitial emphysema) consequent to:
 - Inappropriately high ventilator rate
 - Excessive PEEP (hyper-inflation without gas trapping)
- Atelectasis with risk of hypoventilation and lung injury consequent to:
 - Inadequate PEEP.

Parent Education

- Explain the purpose and function of the HFJV to the parents, stressing that the neonate will appear to have rapid vibrations of the chest wall, but will also be able to breathe spontaneously.
- Promote parental involvement in care as much as possible.
- Refer parents to [Bunnell Parent Information Page](#).

Selection Criteria/Indications for Initiating HFJV

HFJV may be started at the discretion of the Consultant, for lung diseases including but not limited to:

- Air leak syndrome including PIE, unresolved pneumothorax or gas trapping (such as in meconium aspiration syndrome.)
- Infants with non-homogeneous lung disease, particularly BPD.

Commencing HFJV (Model 203 and 204) from Conventional Ventilation (CV)

- Place a transcutaneous CO₂ monitor (T_{cp}CO₂) on the infant and continue pulse oximetry monitoring.
- Plug the HFJV into the “Uninterrupted Power Supply”.
- Install circuit into the HFJV (refer to Setting up the HFJV Circuit).
- Attach water and place below level of HFJV humidifier.
- Attach a clean 2.5, 3.0 or 3.5 mm (as appropriate) HFJV LifePort adaptor to a clean test lung. Attach the pressure monitoring tube to the patient box.
- Connect this testing set to the installed circuit.
- Turn the **ON** switch on.
- Press **SILENCE / Audio Paused**.
- Run the **SYSTEM** test by pressing the **TEST** button - the numbers will change in sequence from 0 through to 9.
- Press the alarm **SILENCE** to silence at the end of the test.
- Run the Operational / FUNCTIONAL test by pressing the **ENTER** button to start default settings (PIP 20 cmH₂O, Rate 420 breaths/min, On-Time 0.02 s).
- Verify that READY condition can be met (approx. 1½ min.), monitored pressures stable and PEEP is 0.0.
- Press **STANDBY**.

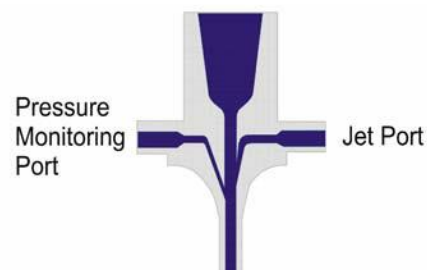


Figure 1. HFJV LifePort adaptor

- Connect the appropriate sized LifePort adaptor onto the infant's tracheal tube whilst still running conventional ventilation (HFJV remains in STANDBY) remembering to keep pressure port plugged until HFJV circuit is connected.
- Connect the circuit to the infant's LifePort adaptor whilst in Standby mode.
- Note baseline monitoring on the HFJV ventilator monitoring display whilst on conventional ventilation (especially, PIP, and mean airway pressure).
- Set the HFJV rate (see "Strategies").
- Set HFJVPIP (in the 'Controls' section) guided by the average displayed PIP shown on the conventional ventilator monitoring and monitored on the HFJV. (PIP on the HFJV should initially be set at approximately the average PIP used during CV when mandatory (non-triggered) breaths are being delivered).
- Check that FiO₂ is the same on both the blender and conventional ventilator.
- Then in quick succession:
 - Change conventional ventilator to CPAP mode
 - Turn CV_{PEEP} up by 1-2 cmH₂O initially.
 - Press **ENTER** on the HFJV ventilator.
 - Increase PEEP to meet the mean airway pressure noted on CV prior to switch to HFJV.
 - Turn minute volume low alarm down to '0 L/min' then high alarm '> 2 L/min'.
 - Turn apnoea alarm delay to 'off' on the conventional ventilator.

Adjust HFJV to target desired PaCO₂

- Observe chest movement and increase HFJV_{PIP} as required to achieve appropriate level of chest "wobble" and appropriate control of PaCO₂ using T_{cp}CO₂.
- Ventilatory adjustments that increase CO₂ removal include:
 - ↑ HFJV_{PIP}
 - ↑ HFJV_{IT}
 - ↑ HFJV_{Rate} (least preferred unless acute RDS in extreme preterm infant)
- Initial adjustments to increase CO₂ removal should be made by increasing HFJV_{PIP}
 - If HFJV_{PIP} increases above 30 cmH₂O, subsequent HFJV adjustments to achieve adequate ventilation and CO₂ removal should alternate stepwise increases in HFJV_{PIP} with stepwise increases in inspiratory time, up to a maximum inspiratory time of 0.034 s and a maximum HFJV_{PIP} of 40 cmH₂O.
 - Subsequent adjustment of ventilation should consider alternating 2-3 cmH₂O increases in HFJV_{PIP} with increase in HFJV_{rate} 30-60 breaths/min.
- Monitor T_{cp}CO₂ and observe any trends.

- Obtain a confirmatory blood gas within 20 minutes of commencing to check accuracy of T_{cp}CO₂. Blood Gas as indicated thereafter (utilise trending on the T_{cp}CO₂) until the PaCO₂ is within target range i.e. 45-65 mmHg.
- Aim to have the infant breathing gently, hence avoid overventilation with HFJV.

Optimise oxygenation and lung volume recruitment

- If SpO₂ is unstable/not maintaining previous levels, or only maintaining acceptable levels by significant increase in FiO₂, increase PEEP by 1-2 cmH₂O. Repeat as required until SpO₂ stabilises.
- Review recent chest Xray for evidence of atelectasis or hyperinflation/air leak. Consider repeat CXR to assess lung expansion on HFJV.
- Consider formal lung volume recruitment manoeuvre, using stepwise incremental/decremental PEEP over 15 min, until FiO₂ stabilises.
 - Always adjust FiO₂ on HFJV blender and conventional ventilator simultaneously.
 - If infant has an air leak syndrome, any increase in PEEP or recruitment manoeuvre needs to be discussed with consultant first.
 - Additional sigh breaths for recruitment in cases of severe atelectasis should be discussed with the consultant. **Do not increase CV rate > 5 breaths/min** to avoid inadvertent PEEP and risk of gas trapping. Once lung is recruited, wean CV_{rate} to 0 breaths/min if commenced at a higher rate. A stable SpO₂ (90-95 %) with a CV_{rate} of 0 breaths/min (ie CPAP mode), and FiO₂ < 0.25 indicates appropriately recruited lung.
 - Review T_{cp}CO₂ and servo pressure during lung volume recruitment, as change in compliance associated with lung volume recruitment may alter CO₂ removal.
- Adjustment in CVPEEP is the primary mode of adjusting MAP. Other ventilator variables that influence MAP when adjusted include:
 - HFJV_{PIP}
 - HFJV_{IT}
 - HFJV_{rate} (do not use to adjust MAP but be aware that any adjustments in rate undertaken to influence T_{cp}CO₂ may influence MAP).

Before leaving the infant's cot side

- Check automatic alarm settings when ready light is showing (MAP +/- 1.5 cmH₂O, servo pressure +/- 0.3-0.5 cmH₂O).
- Make sure the monitored pressures are stable and the Ready light is on.
- Be prepared to suction frequently within a short interval after commencing HFJV The READY light must be ON prior to suctioning.

Note: The **Enter button and Reset button should only be pressed** as necessary to enter new control settings or to intentionally recalculate the alarm parameters, respectively.

Inadvertent PEEP

Always monitor HFJV_{PEEP} and CV_{PEEP}. An HFJV_{PEEP} reading which is higher than the CV_{PEEP} is known as “Inadvertent PEEP”. Inadvertent PEEP indicates air trapping. Gas trapping occurs when tidal volumes have insufficient time to exit the lungs.

Maintain optimal lung volumes as both over-inflation and under-inflation are injurious to the newborn lung. In the case of grossly overexpanded lungs, you will need to deflate considerably before any improvements in oxygenation will result.

- To minimise overexpanded lungs: avoid using “sigh” breaths on the conventional ventilator; ↓ HFJV_{rate} to lengthen exhalation time. HFJV_{I-time} may be increased in compensation to ensure that CO₂ does not increase. Increases in HFJV_{I-time} have minimal impact on the absolute expiratory time, which is a key determinant of the amount of air that can be exhaled during the expiratory phase.
- In most cases **do not** decrease PEEP as hyperinflated lungs are usually a result of air trapping due to airway collapse, not excessive PEEP.

Management

Homogeneous Lung Disease

Respiratory Distress Syndrome, Pneumonia (esp. Group B Streptococcal) and Pulmonary Haemorrhage

Choose an initial CV Rate of 0-5 breaths/min depending on the severity of the disease process and the degree of under inflation. Maintain alveolar inflation using a PEEP of 6-12 cmH₂O depending on the severity of the disease. HFJV_{PIP} is started at ≈ CV_{PIP} (see above).

For patients with a very poor compliance, it may take a higher background CV_{PIP} level to recruit atelectatic alveoli (e.g. 26-34 cmH₂O), but once recruited, optimal PEEP can be used to prevent loss of lung recruitment. The CV_{PIP} and CV_{Rate} can then be weaned appropriately, aiming to reduce the rate to 0 (i.e. CPAP mode.)

As compliance improves, FiO₂ should be decreased before weaning PEEP. CV_{PIP} and CV_{rate} should be kept as low as possible. Clinically, improved compliance can be recognised by an increase in Servo Pressure (refer to [Understanding Servo Pressure](#)).

Air leak:

- Choose an initial CV Rate of 0 breaths/min (i.e. CPAP mode),
- Maintain alveolar inflation using a PEEP of 6-8 cmH₂O depending upon the severity of the disease.
- Start HFJV_{PIP} below the CV_{PIP} and increase HFJV_{PIP} as required to achieve slight wiggle. This strategy is appropriate for most infants with PIE or pneumothorax.
- It is preferable to increase the HFJV_{I-time} rather than increase the HFJV_{rate} to improve CO₂ removal once adequate chest wiggle is achieved.

Non-Homogeneous Lung Disease

BPD, Meconium Aspiration Syndrome and focal Pneumonia:

- Use lower HFJV_{rate} (240-360 breaths/min) to avoid gas trapping.
- Use higher PEEP (8-12 cmH₂O) to splint airways and allow meconium/secretions to evacuate in the swirling HFJV expiratory flow.
- Avoid using “sigh” breaths to prevent gas trapping.

Understanding Servo Pressure

Servo Pressure auto-regulates gas **flow** to the infant to keep monitored PIP=set PIP. Servo pressure changes as lung volume or mechanics change. (Note: Servo Pressure increase is usually good but it may indicate an air leak or circuit leak).

Servo Pressure increases with:

- Improving compliance or resistance.
- Leak around ETT.
- Tubing leak.

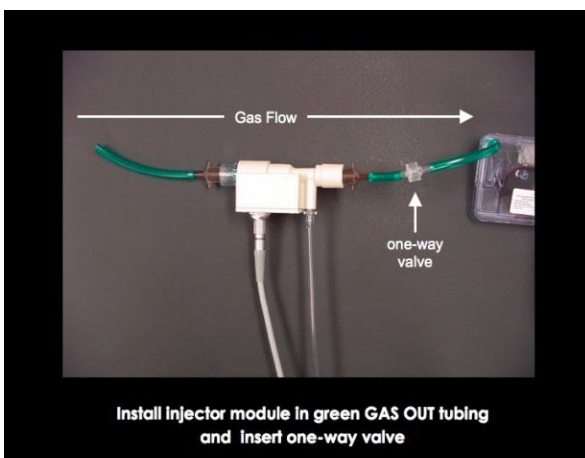
Servo Pressure decreases with:

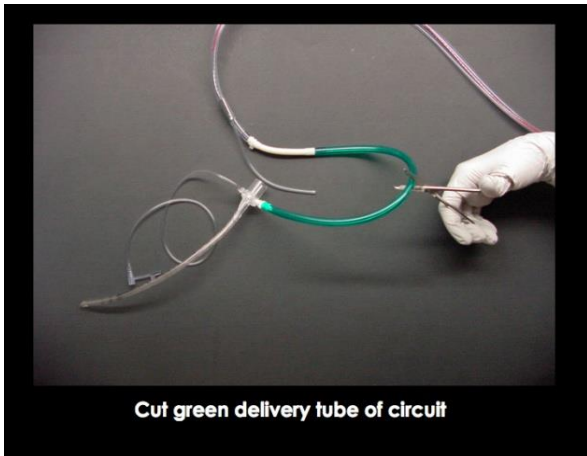
- Worsening compliance or resistance.
- Obstructed ETT.
- Bronchospasm.
- Tension pneumothorax.
- Right mainstem intubation.
- Infant needs ETT suctioning.
- Infant activity.

ETT Suctioning on the HFJV

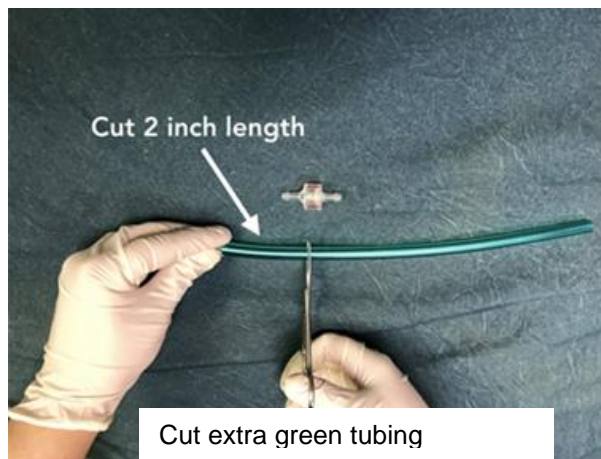
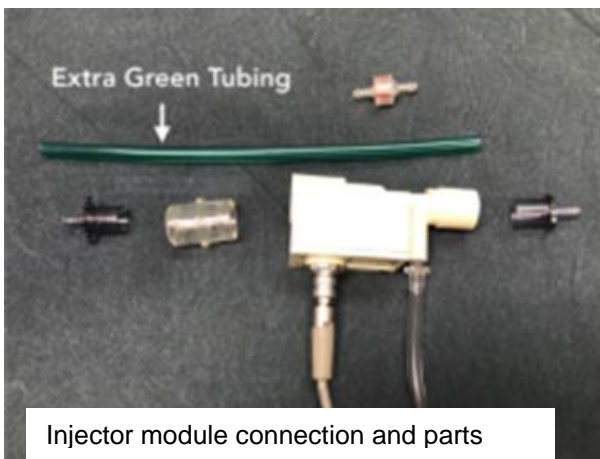
- Make appropriate preparations to suction.
- Check that the HFJV **Ready light is ON**.
- **Place the Jet into the Standby mode.**
- **Immediately suction** the infant using the Ballard’s closed suction system with the in-built “elbow” **then recommence HFJV by pressing ENTER.**
- Repeat the above 2 steps as often as required to achieve effective clearance of the secretions. Suctioning may need to be performed more frequently in the first 4-6 hours after commencing HFJV. Suctioning frequency may then subside.
- Make sure the monitored pressures are stable and the Ready light is on before leaving the infant’s cot side.

Nitric Oxide and HFJV Bunnell Model 203





Nitric Oxide and HFJV Bunnel Model 204





Secure injector module to handle with strappit



General approach to weaning HFJV

- Wean ventilation in the reverse order to the approach used to control PaCO₂ during initiation of ventilation:
 - Wean sedation, if any is being administered.
 - Initially prioritise decrease in HFJV rate, followed by PIP.
 - Gradually wean MAP by decreasing PEEP.
 - Titrate FiO₂ throughout as appropriate
 - Continue to decrease HFJV_{PIP} until infant is either
 - **extubated** (HFJV_{PIP} 15-25 cmH₂O, infant breathing regularly and maintaining acceptable PaCO₂). Extubate to nCPAP device set at a level matching the final HFJV MAP, usually 6-8 cmH₂O. Note: There is no need to change from HFJV to a CV mode before extubation.
- OR**
- **transferred** back to conventional ventilation.

Cleaning and Storage

When High Frequency Jet Ventilation (HFJV) has been ceased, leave the Jet Ventilator by the bedside until completely satisfied the infant will not require the ventilator. A satisfactory blood gas sample, good TcpCO₂ readings and oxygen saturations will confirm the decision to cease HFJV.

- The HFJV and if it has an accompanying conventional ventilator (Model 203) can now be cleaned and set up ready for use.
- **HFJV circuit** - The whole patient circuit is disposable including the humidifier cartridge and green oxygen tubing. The Jet adaptor is also disposable.
- **Non-disposable parts** - Wipe over the patient whisper box, HFJV, Conventional Ventilator and its humidifier together with temperature probe and adaptor with hospital grade disinfectant.
- Set up as per Setting up HFJV Circuit procedure.
- Always check the conventional ventilator settings and function prior to moving for storage.

Setting-Up the HFJV Circuit

- Open new circuit which comes as one complete piece with all connections secured.
- Open humidifier door to slide cartridge in and lock.
- Firmly attach the green tubing to “Gas Out” on the front left of the ventilator.
- Attach the thin clear purge tubing to “Purge” on the front right of the ventilator and to the Whisper Jet Patient Box (patient box) on the ventilator side.
- Place a red IV cap on the end of the circuit (water pump tube) and then attach the Pinch tubing to the other side of the red cap to keep the circuit clean.
- Place the circuit into a plastic drawstring bag for protection until used.

Note: Leave the jet ventilator set up at this point when placing into storage. The pinch tube will become damaged if stored loaded into the pinch valve. It is important to **only** proceed with the next steps just prior to the HFJV being used.

- Open water pump and insert the clear water inlet tube from the bottom right of the humidifier cartridge. Mind fingers when snapping the pump door closed.
- Press the “push to load” button on the top of the patient box and gently stretch the pinch tube into the pinch valve under the plexiglass cover on the patient box.
- Connect the water inlet tube to the short giving set and connect the water transfer tubing to the 1 L water for irrigation bag and unclamp the transfer tubing. (Keep bag below ventilator to avoid gravity filling the humidifier cartridge).



References and related external legislation, policies, and guideline

1. Bunnell. Life Pulse High Frequency Ventilator In-Service Manual, pages 1-88; Salt Lake City <http://www.bunl.com/index.html>
2. Giannakopoulou C, Korakaki E, Manoura A, Bikouvarakis S, Papageorgiou M, Gougiosis D, Hatzidaki E: Significance of hypocarbia in the development of periventricular leukomalacia in preterm infants. *Pediatr Int* 2004 Jun; 46(3):268-73
3. Klein, J. Neonatology Handbook: Pulmonary: Management Strategies with High Frequency Jet Ventilation.
4. Bunnell. Technology & Clinical Bulletin, August 27, 2010.

Useful resources

- [Bunnell Parent Information](#)
- [Bunnell Life Pulse HFJV Controls](#)

This document can be made available in alternative formats on request.

Document Owner:	Neonatology		
Reviewer / Team:	Neonatology Coordinating Group		
Date First Issued:	December 2012	Last Reviewed:	October 2022
Amendment Dates:	July 2022 – Addition of Model 204	Next Review Date:	25 th October 2025
Approved by:	Neonatology Coordinating Group	Date:	25 th October 2022
Endorsed by:	Neonatology Coordinating Group	Date:	
Standards Applicable:	NSQHS Standards:   Child Safe Standards: 1,10		

Printed or personally saved electronic copies of this document are considered uncontrolled



Healthy kids, healthy communities

Compassion
Excellence
Collaboration
Accountability
Equity
Respect

Neonatology | Community Health | Mental Health | Perth Children’s Hospital